



**Salinity**

**Acid Value**

**Vitamin C**

**Brix**

**Water Content**

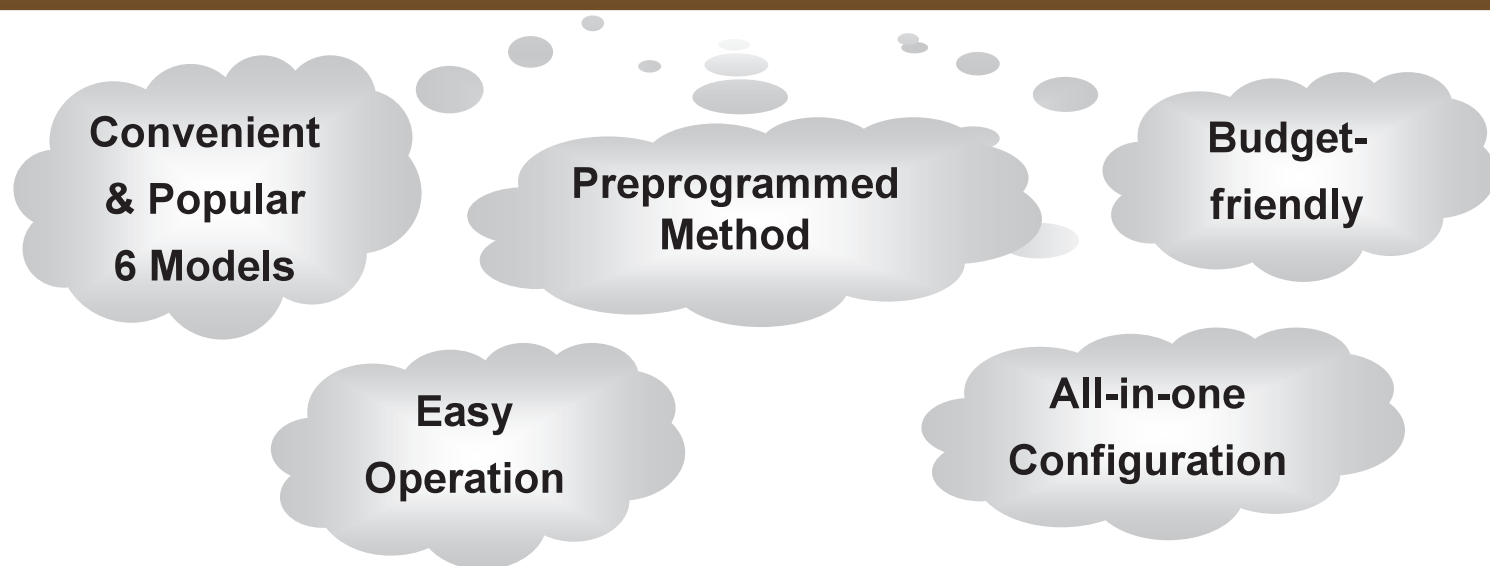
# **KEM SET for Food** **Simple & Easy Testing**



**KEM**

# KEM SET for Food

## Simple & Easy Testing



### KEM SET-A

Salinity

Acid Value

Vitamin C

Potentiometric Titrator  
<High-end Model>

### KEM SET-B

Salinity

Acid Value

Vitamin C

Potentiometric Titrator  
<Popular Model>

### KEM SET-C

Salinity

Acid Value

Vitamin C

Potentiometric Titrator  
<Low-cost Model>

### KEM SET-D

Brix

Density Meter

### KEM SET-E

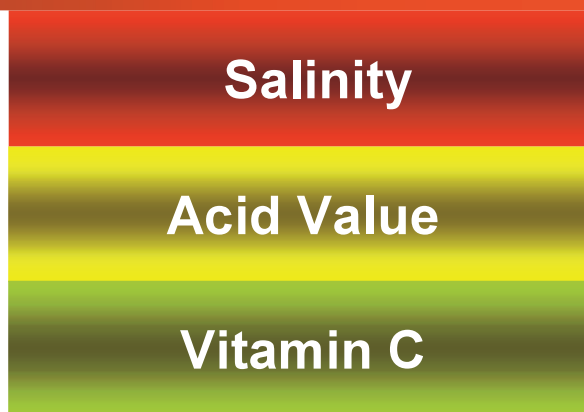
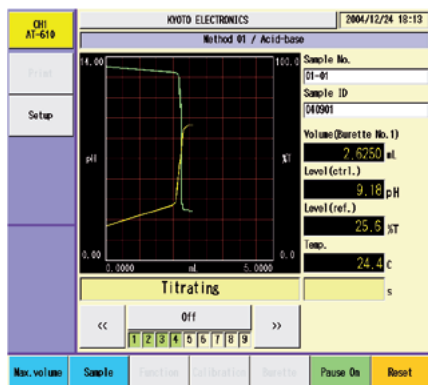
Brix

Refractometer

### KEM SET-F

Water Content

Karl Fischer Moisture Titrator  
(Volumetric)



**KEM SET-A**  
High-end Model



AT-610



- Easy Operation on Touchscreen
- Real-time Titration Curve
- High-precision Burette (100% Burette Inspection)
- GMP, GLP
- Protection Film for Touchscreen
- Display Angle Adjustable
- Incl. Every Necessary Electrode
- Steps for Full Stroke: 20,000 steps

## Optional Kits for KEM SET-A

- Recommended consumables for 2 years include:
  - ✓ Protection film
  - ✓ Tubes
  - ✓ Cylinder with 20mL piston (incl. piston head)
- Can be connected with KEM Karl Fischer Titrator
  - ✓ Simultaneous titrations
  - ✓ Coulometric or volumetric





**Salinity**

**Acid Value**

**Vitamin C**

**CE**

**AT-510**

- Simple Measurement
- Real-time Titration Curve
- High-precision Burette (100% Burette Inspection)
- GMP, GLP
- Steps for Full Stroke: 20,000 steps



## Optional Kits for KEM SET-A/-B

- Multiple Sample Changer (CHA-500-12 / CHA-600-12)
  - ✓ Up to 12 samples with rinse systems
  - ✓ Easier measurement & time-saving tool



**CE**

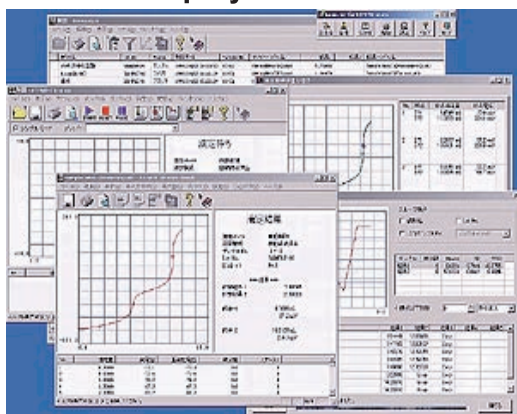
**CHA-500-12**



**CE**

**CHA-600-12**

## AT-Win Display



- AT-Win (Software)
  - ✓ Easier operation from your PC
  - ✓ Measurement data saved in your PC

**CE**

**AT-500N**



**Salinity**

**Acid Value**

**Vitamin C**

**KEM SET-C**  
Low-cost Model

- **Easy Operation**
- **Simple Measurement**
- **Budget-friendly Model**
- **High-precision Burette (100% Burette Inspection)**
- **Steps for Full Stroke: 20,000 steps**

## **Electrodes Included in KEM SET-A/-B/-C**

### **1. Salinity**

**98-100-C373 Combined Silver Electrode**

### **2. Acid value (Aqueous)**

**98-100-C171 Combined Glass Electrode**

### **3. Vitamin C**

**98-100-C272 Combined Platinum Electrode**

DA-6xx Series



- **Brix Measurement**  
**by Density Meter**

- Measuring range 0-3g/cm<sup>3</sup>
- Accuracy  $\pm 5 \times 10^{-5}$  g/cm<sup>3</sup>



**KEM SET-D**  
Brix

☺ **KEM is the world's only manufacturer of both Density Meters and Standard Liquids.**

**KEM Portable Models – Another choice to Check Brix**



DA-130N

- **Brix Measurement**  
**by Portable Density Meter**
- Measuring Range: 0 -2 g/cm<sup>3</sup>
- Measuring temperature:  
0-40 deg C
- Battery-operated
- One-handed Operation
- Simple Measurement

[www.kyoto-kem.com](http://www.kyoto-kem.com)



## ● Brix Measurement by Refractometer

RA-600

**KEM SET-E**  
Brix

- Range (nD): 1.3200 to 1.7000
- Sample Temp.: 5 to 75 deg C
- Easy Operation on Touch screen

☺ KEM is the world's only  
manufacturer of both  
Refractometers and  
Standard Liquids.

## KEM Portable Models – Another choice to Check Brix



RA-250WE

## ● Brix Measurement by Portable Brix Meter

- Brix Range: 0 to 90 %
- Resolution: 0.1% Brix
- Precision:  $\pm 0.2\%$  Brix

- Easy to maintain with washing by water
- Measurement time within 2 seconds
- 30,000 times long battery time



- **Water Content Analyses by Karl Fischer Moisture Titrator**
- **Volumetric Method**

## **KEM SET-F** **Water Content**

- **Range 0.1mg to 500mg H<sub>2</sub>O**
- **Easy Operation**
- **Simple Measurement**
- **High-precision Burette (100% Burette Inspection)**

**CE**

**MKS-500**



### **Optional Kits for KEM SET-F**

- **Recommended consumables for 2 years include:**

- ✓ **Twin Platinum Electrode/KF**
- ✓ **KF Grease (5g)**
- ✓ **Silica Gel (500g)**



- **Heat Extractor for Sugar Samples (ADP-344)**
- ✓ **Convenient device for sugar-containing samples**
- ✓ **Such as chocolates and candies**