



Pharmacy

Architecture

Food

Environment

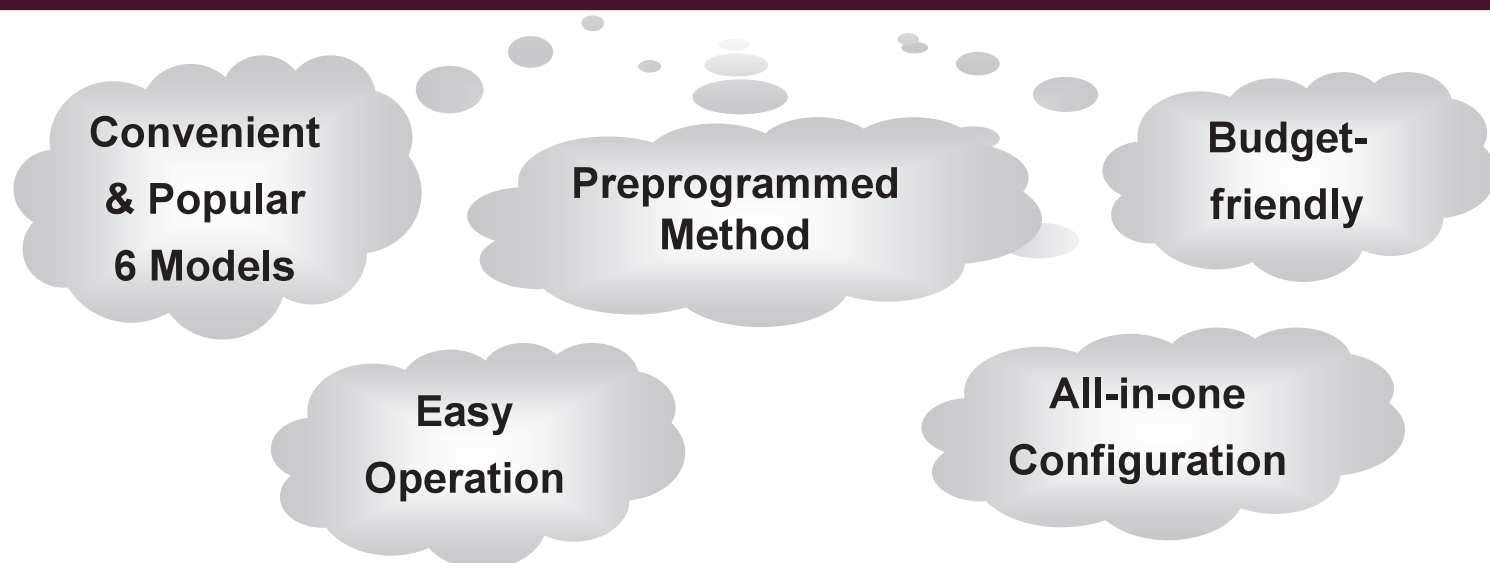
Human Engineering

**KEM SET for Educational Institute**  
**Simple & Easy Testing**



# KEM SET for Educational Institute

## Simple & Easy Testing



**KEM SET- A**  
Pharmacy

Acid-Base, Salinity, Stat  
By Potentiometric Titrator

**KEM SET- B**  
Architecture

Thermal Conductivity  
By Thermal Conductivity Meter

**KEM SET- C**  
Architecture

Heat Flow  
By Heat Flow Meter

**KEM SET- D**  
Food

Check Brix  
Refractometer

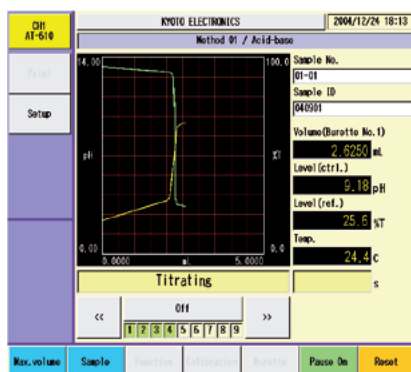
**KEM SET- E**  
Environment

COD / Chloride Ion  
By Potentiometric Titrator

**KEM SET- F**  
Human Engineering

WBGT  
By Heat Stroke Prevention Meter

**Acid-base  
Salinity  
Stat**



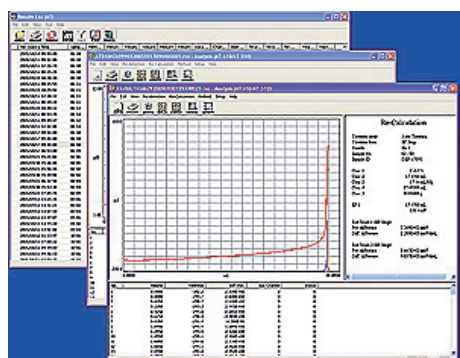
**CE**

AT-610



- BP / EP / JP / USP
- Easy Operation on Touchscreen
- Real-time Titration Curve
- High-precision Burette (100% Burette Inspection)
- GMP, GLP
- Protection Film for Touchscreen
- Display Angle Adjustable
- Incl. Every Necessary Electrode
- Steps for Full Stroke: 20,000 steps
- Silver Electrode & pH standard Electrode included

## Optional Kits for KEM SET-A



- Analysis Software for Titration Results <Tview6>
- ✓ Can capture titration results stored in titrator on PC through CF memory card and manage/analyze them.

**CE**

CHA-600-12

- Multiple Sample Changer (CHA-600-12)
- ✓ Up to 12 samples with rinse systems
- ✓ Easier measurement & time-saving tool



[www.kyoto-kem.com](http://www.kyoto-kem.com)

# Thermal Conductivity

- Stick sensor probe on sample surface of thermal equilibrium, and press start key.

KEM SET-B  
Architecture



QTM-500

- Sample: Insulator material, Ceramics Rubber, Plastic, Fiber, Paper
- Measuring method: Hot Wire method
- Precision:  $\pm 5\%$  reading value per reference plate
- Measuring range:  $\pm 0.023$  to  $12\text{W/m}\cdot\text{K}$
- CE conformed
- Measuring time: standard 60sec (specimen must be in equilibrium)

## Optional Sensors for KEM SET-B

- Insulation damp probe(PD-13)(CE)  
For measurement of hydrous or electrically conductive material like foods or crude concrete, etc.
- Needle probe (PD-NO)(Non-CE)  
For measurement of high viscosity liquid or material like lubricant or coolite, etc.

PD-NO





## Heat Flow

**KEM SET-C**  
Architecture



**HFM-215N**

- Multiple-point Heat Flow Meter
- Compact and lightweight design  
3.5 inch TFT color LCD  
Rechargeable battery and AC adapter
- 8-channel measurement allows data to be continuously stored for 55 hours with 1-sec data saving cycle
- Included 2 set TR2-C standard low heat flow sensor
- Non CE conformed



**KR2 sensor**

**KR2 standard low heat flow sensor**

- Normal heat flow range: 12-3500 W/m<sup>2</sup>
- Normal temperature range: - 40 - 150°C
- Core Material: Silicone rubber
- Option: high heat flow sensor

### HFM-201 Portable Heat Flow Meter



**HFM-201**

- New Hand-held type convenient meter for o-site use
- Heat flow level in W/m<sup>2</sup> or kcal/m<sup>2</sup>h and temperature °C can be switched and shown on display.
- Data memory can save 20 groups of files totaling 100 sets of data in storage.
- Power source: 2 AA dry cells (80-hour continuous run) or AC adapter

## Check Brix

- Brix Range 0 to 90 %
- Resolution: 0.1% Brix
- Precision:  $\pm 0.2\%$  Brix



RA-250WE

## ● Check Brix by RA-250HE Portable Refractometer



- Easy to maintain with washing by water
- Measurement time within 2 seconds
- 30,000 times long battery time

KEM SET-D  
Food

## Bench top refractometer



RA-600

## ● Check Brix by RA-600 Benchtop Refractometer

- Brix Range 0 to 100 %
- Resolution: 0.1% Brix
- Precision:  $\pm 0.1\%$
- Space-saving of “A4 Size” and Easy Maintenance
- Touch Panel Control

## COD / Chloride Ion

- Simple Measurement
- High-precision Burette (100% Burette Inspection)
- Steps for Full Stroke: 20,000 steps
- Combined Silver Electrode included for Chloride Ion Analysis

- COD-510 Titration Unit for Chemical Oxygen Demand (COD) Included Combined Platinum Electrode for COD analysis

AT-510



### Optional Kits for KEM SET-E

APB-610



- Auto Piston burette
- Unit for manual titration or dosing of reagent or solvent

EBU-610 series



- Exchangeable Burette Units

1 mL burette:  $\pm 0.005$  mL

5 mL burette:  $\pm 0.01$  mL

10 mL burette:  $\pm 0.015$  mL

20 mL burette:  $\pm 0.02$  mL

50 mL burette:  $\pm 0.05$  mL

[www.kyoto-kem.com](http://www.kyoto-kem.com)

KEM SET-E  
Environment



# Heat Stroke



WBGT-103

- Heat Stroke Prevention Meter for Sporting
- Measuring range  
WBGT : 0 – 50 °C  
Temperature : 0- 50 °C  
Relative humidity : 10 - 90%RH
- Globe temperature : 0 - 60 °C
- Battery life : Approximately 70 hours in continuous use



## Thermal manikin

The Thermal manikin is a dummy human figure fabricated to measure thermal condition of all comfort is mostly influenced by thermal environment, and such surrounding Factors are quantitatively measured with this manikin without Errors from individual differences. The thermal manikin is designed to meet these purposes As follows.

- A) Fabricated into same size as a human body
- B) Separate heating control of divided parts or areas over the manikin
- C) Separate temperature control of divided parts or areas over the manikin
- D) Shoulders, femurs and knees movable with joints to change positions of manikin

